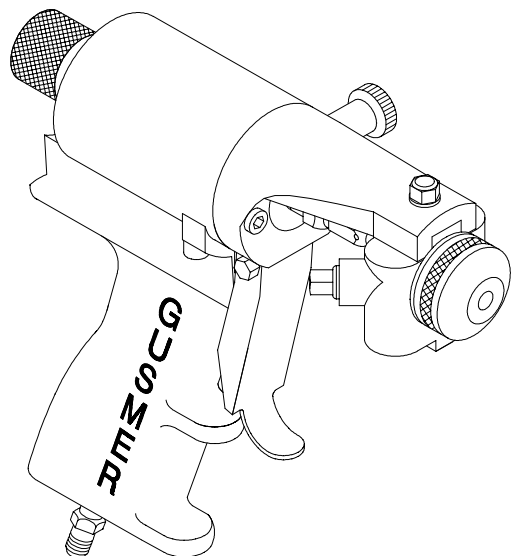




"Teamwork & Communication"



Model GX-8 Spray Gun

Parts Identification Manual 32943-ID

November 3, 1999

Issue 1

GUSMER CORPORATION®

A Subsidiary of Gusmer Machinery Group, Inc.
One Gusmer Drive
Lakewood, New Jersey, USA 08701-8055
Toll Free 1-800-367-4767 (USA & Canada)
Phone: (732) 370-9000
Fax: (732) 905-8968

Copyright 1999, GUSMER CORPORATION®

<http://www.gusmer.com>

NOTICE: This manual contains important information for your GUSMER equipment. Read and retain for future reference.

NOTICE: *The equipment described in this technical manual must only be operated or serviced by properly trained individuals, thoroughly familiar with the operating instructions and limitations of the equipment. For technical service, call your local distributor. Call: 1-800-FOR-GSMR (1-800-367-4767) for the name and telephone number of your local distributor.*

NOTICE: *All statements, information and data given herein are believed to be accurate and reliable but are presented without guarantee, warranty or responsibility of any kind expressed or implied. Statements or suggestions concerning possible use of GUSMER equipment are made without representation or warranty that any such use is free of patent infringement, and are not recommendations to infringe any patent. The user should not assume that all safety measures are indicated or that other measures may not be required.*

CONTENTS

LIST OF FIGURES4

LIST OF TABLES4

WARRANTY5

GX-8 SPRAY GUN ASSEMBLIES6

 FINAL ASSEMBLY 6

 HANDLE ASSEMBLY..... 8

 COUPLING BLOCK ASSEMBLY 10

APPENDIX11

INSTRUCTION MANUAL DISCREPANCY REPORT13

LIST OF FIGURES

FIGURE 1. FINAL ASSEMBLY (PART NO. 32100-CSTM), EXPLODED VIEW	6
FIGURE 2. HANDLE ASSEMBLY (PART NO. 32111), EXPLODED VIEW	8
FIGURE 3. COUPLING BLOCK ASSEMBLY, (PART NO. 16140), EXPLODED VIEW	10

LIST OF TABLES

TABLE 1. FINAL ASSEMBLY, (PART NO. 32100-CSTM), PARTS	7
TABLE 2. HANDLE ASSEMBLY, (PART NO. 32111), PARTS.....	9
TABLE 3. COUPLING BLOCK ASSEMBLY, (PART NO. 16140), PARTS.....	10
TABLE 4. GX-8 MODULE SPECIFICATIONS	11
TABLE 5. SET-UP CHART FOR GX-8 MODULES	12

WARRANTY

Gusmer Corporation (Gusmer) provides a limited warranty to the original purchaser (Customer) of Gusmer manufactured parts and equipment (Product) against any defects in material or workmanship for a period of one year from the date of shipment from Gusmer facilities.

In the event Product is suspected to be defective in material or workmanship, it must be returned to Gusmer, freight prepaid. If Product is found to be defective in material or workmanship, as determined solely by Gusmer, Gusmer will issue full credit to Customer for the freight charges incurred in returning the defective Product, and either credit will be issued for the replacement cost of the Product or a replacement part will be forwarded no-charge, freight prepaid to Customer.

This warranty shall not apply to Product Gusmer finds to be defective resulting from: installation, use, maintenance, or procedures not accomplished in accordance with our instructions; normal wear; accident; negligence; alterations not authorized in writing by Gusmer; use of "look alike" parts not manufactured or supplied by Gusmer; or Product used in conjunction with any other manufacturer's pumping or proportioning equipment. Further, the terms and conditions of this warranty shall not apply to services or repairs made to Product by any third party not authorized in writing by Gusmer. For such Product, a written estimate will be submitted to Customer at a nominal service charge, itemizing the cost for repair. Disposition of Product will be done in accordance with the terms stated on the written estimate.

The warranty provisions applied to product that are not manufactured by Gusmer will be solely in accordance with the warranty provided by the original manufacturer of the product.

GUSMER MAKES NO WARRANTY WHATSOEVER AS TO THE MERCHANTABILITY OF, OR SUITABILITY FOR, ITS PRODUCT TO PERFORM ANY PARTICULAR PURPOSE. CREDIT FOR, OR REPLACEMENT OF, PRODUCT DEFECTIVE IN MATERIAL OR WORKMANSHIP SHALL CONSTITUTE COMPLETE FULFILLMENT OF GUSMER OBLIGATIONS TO CUSTOMER. NO OTHER WARRANTY, EXPRESSED OR IMPLIED ON ANY PRODUCT IT MANUFACTURES AND/OR SELLS, WILL BE RECOGNIZED BY GUSMER UNLESS SAID WARRANTY IS IN WRITING AND APPROVED BY AN OFFICER OF GUSMER.

Under no circumstances shall Gusmer be liable for loss of prospective or speculative profits, or special indirect, incidental or consequential damages. Further, Gusmer shall have no liability for any expenses including, but not limited to personal injury or property damage resulting from failure of performance of the product, use of the product, or application of the material dispensed through the product. Any information provided by Gusmer that is based on data received from a third source, or that pertains to product not manufactured by Gusmer, while believed to be accurate and reliable, is presented without guarantee, warranty, or responsibility of any kind, expressed or implied.

Gusmer through the sale, lease, or rental of Product in no way expresses or implies a license for the use of, nor encourages the infringement of any patents or licenses.

To insure proper validation of your warranty, please complete the warranty card and return it to Gusmer within two weeks of receipt of equipment.

Revised 11/12/98

TABLE 1. FINAL ASSEMBLY, (PART NO. 32100-CSTM), PARTS

Part Number	Description	Quantity
2130	Air Hose	1
3101-1-PKG	Coupling Block Gasket (Package of 2)	1
3104-A	A-Check Valve	1
3104-R	R-Check Valve	1
3145-1	Coupler Plug	1
3145-2	Coupler	1
8121	O-Ring	1
16140-2	Coupling Block Mounting Screw	1
32101-2	Rear Seal Nut	1
32101-3	Screen Retainer	2
32101-4	Gun Block Mounting Screw	1
32101-5	Jam Nut	1
32111	Handle Assembly	1
32111-10	PCD Retainer	1
32114-094	Valving Rod Assembly	1
32130-100	Gun Block Screen	2
32131-A	Iso Screen Screw	1
32131-R	Resin Screen Screw	1
32156	Rear Seal Packing	1
* 32170-SIZE-1-PKG	Round/Fan Module (Includes Clean-out Tool)	1
* 32182-SIZE-3	Round/Fan Pattern Control Disc (PCD)	1
32184	Air Cap	1
32101	Gun Block	1

** See Appendix for Standard Sizes*

HANDLE ASSEMBLY

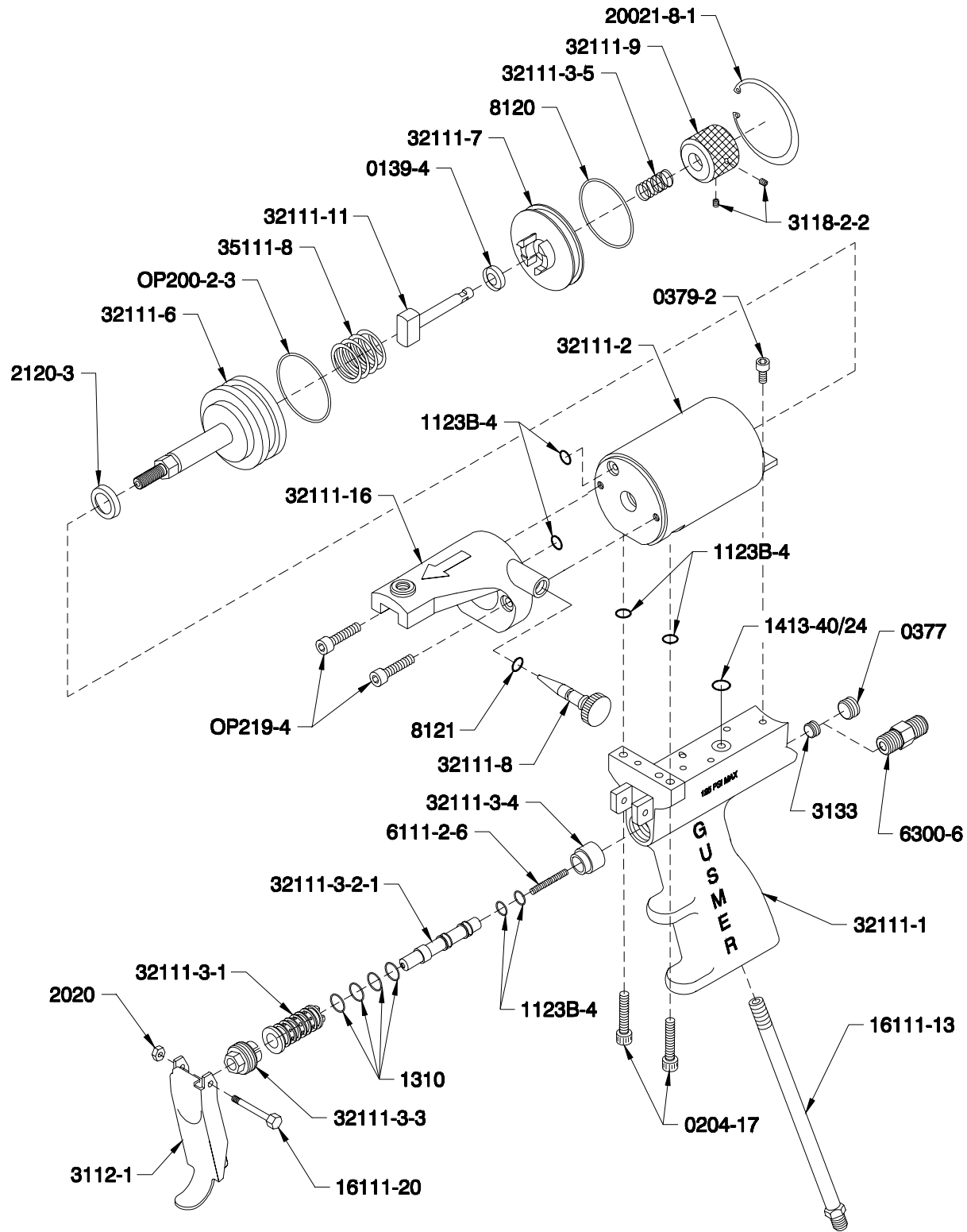


Figure 2. Handle Assembly (Part No. 32111), Exploded View

TABLE 2. HANDLE ASSEMBLY, (PART NO. 32111), PARTS

Part Number	Description	Quantity
* 0139-4	Cup Seal	1
0204-17	Socket Head Cap Screw	2
0377	Flush Seal Pipe Plug	1
0379-2	Socket Head Cap Screw	1
* * 1123B-4	O-Ring	6
* * 1310	O-Ring	4
1413-40/24	O-Ring	1
2020	Lock Nut	1
* 2120-3	U-Cup	1
3112-1	Trigger	1
3118-2-2	Socket Head Set Screw	2
3133	Flush Seal Pipe Plug	1
* * 6111-2-6	Spring	1
6300-6	Hex Nipple (Optional)	1
* 8120	O-Ring	1
8121	O-Ring	1
16111-13	Pipe Nipple	1
16111-20	Trigger Mounting Screw	1
20021-8-1	Truarc	1
32111-1	Gun Handle	1
32111-2	Air Cylinder	1
32111-3-1	Valve Liner	1
32111-3-2-1	Valve Spool	1
32111-3-3	Valve Retainer Nut	1
32111-3-4	Spring Seat	1
32111-3-5	Spring	1
32111-6	Piston Assembly	1
32111-7	End Cap	1
32111-8	Air Adjustment Needle	1
32111-9	Stop Knob	1
32111-11	Stop Pin	1
32111-16	Bracket Assembly	1
35111-8	Piston Spring	1
* OP200-2-3	O-Ring	1
OP219-4	Socket Head Cap Screw	2

* Air Cylinder Rebuild Kit (Part No. 32113-1)

* * Trigger Rebuild Kit (Part No. 32123-1)

COUPLING BLOCK ASSEMBLY

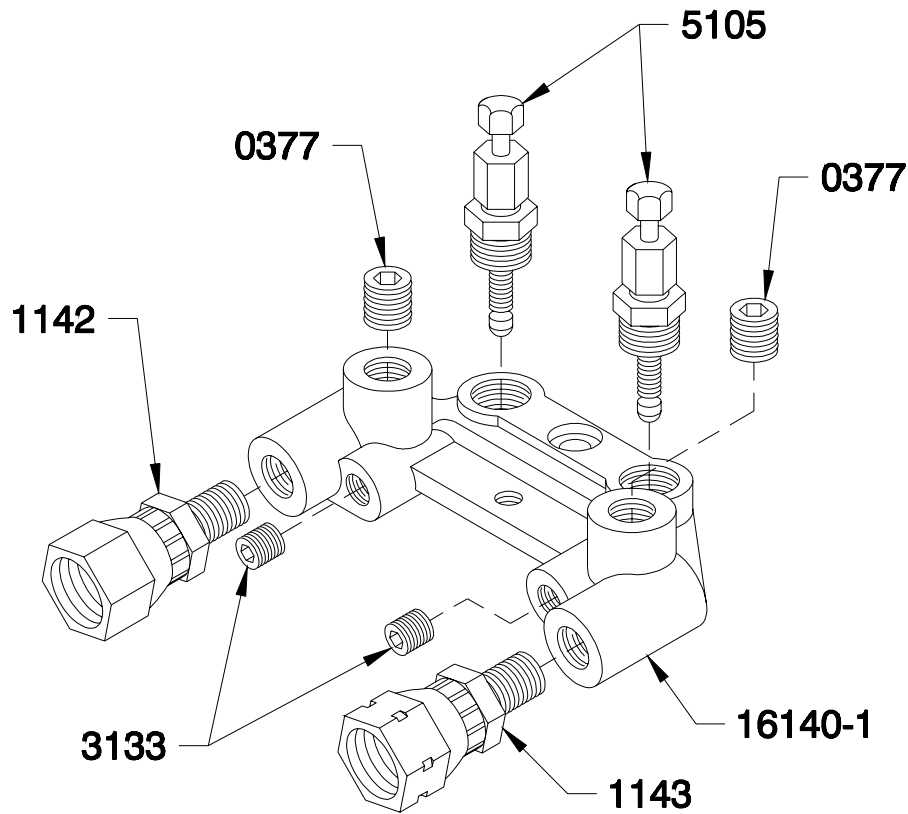


Figure 3. Coupling Block Assembly, (Part No. 16140), Exploded View

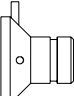
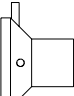
TABLE 3. COUPLING BLOCK ASSEMBLY, (PART NO. 16140), PARTS

Part Number	Description	Quantity
* 0377	Pipe Plug	2
1142	R-Swivel Fitting	1
1143	A-Swivel Fitting	1
* 3133	Pipe Plug	2
* 5105	Manual Valve Assembly	2
16140-1	Coupling Block W/ Plugs and Valves	1

* Included with Part No. 16140-1

APPENDIX

TABLE 4. GX-8 MODULE SPECIFICATIONS

 * ROUND MODULE		CLEANOUT DRILL			
<u>Part Number</u>	<u>Diameter in/(mm)</u>	<u>Iso Port Part Number</u>	<u>Diameter in/(mm)</u>	<u>Polyol Port Part Number</u>	<u>Diameter in/(mm)</u>
32170-1-1-PKG	.098 (2.49)	0941-45	.013 (.33)	0941-45	.013 (.33)
 FAN MODULE		CLEANOUT DRILL			
<u>Part Number</u>	<u>Diameter in/(mm)</u>	<u>Iso Port Part Number</u>	<u>Diameter in/(mm)</u>	<u>Polyol Port Part Number</u>	<u>Diameter in/(mm)</u>
32170-2-1-PKG	.098 (2.49)	0941-45	.013 (.33)	0941-45	.013 (.33)

** The Round Module can be identified by a groove in its cylindrical body.*



WARNING: EACH MODULE HAS A SPECIALLY SIZED CLEANOUT DRILL. TO AVOID DAMAGE TO THE MODULE TAKE CARE TO USE THE CORRECT DRILL.

TABLE 5. SET-UP CHART FOR GX-8 MODULES

Static Pressure (psi)	Output (lbs/min) 18 to 20 inches from target	Pattern Dia. (Inches)	Module Part Number	Polyol Port Size	Number of Orifices	Iso Port Size	Number of Orifices	PCD Part Number
<u>Round Spray Pattern</u>								
2500	1.0	4	32170-1-1-PKG	.013	1	.013	1	32182-020-3
2500	1.4	5	32170-1-1-PKG	.013	1	.013	1	32182-024-3
<u>Fan Spray Pattern</u>								
2500	1.0	6	32170-2-1-PKG	.013	1	.013	1	32182-201-3
2500	1.4	7	32170-2-1-PKG	.013	1	.013	1	32182-202-3

NOTE: The above specifications are based upon field test data which may vary depending upon the specific chemical system and application.

INSTRUCTION MANUAL DISCREPANCY REPORT

[illegible]

Instructions:

Complete the above fields of the form by following the instructions listed on the reverse side of this sheet and mail to:

Gusmer Corporation
One Gusmer Drive PO Box 2055
Lakewood, NJ 08701

Field Number	Field Title	Description
1	Date	Enter date report is submitted.
2	Name	Enter name of person making report.
3	IM Number	Enter the Part Number of the Instruction Manual from the title page.
4	Issue Number	Enter the Issue number of the Instruction Manual from the title page. If there is no issue number enter NONE .
5	Date of Issue	Enter the date of Issue of the Instruction Manual from the title page. If there is no issue date, enter NONE .
6	Page Number	Enter the page number containing the discrepancy
7	Discrepancy	Provide a brief description of discrepancy

NOTE: You may send a marked copy of the page as an attachment to your submittal.