

# INSTRUCTION SHEET

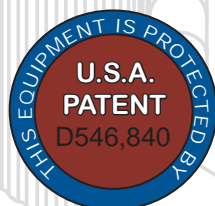
**GlasCraft**  
DISPENSING EXCELLENCE

## GUARDIAN A5 Or A6-6000 **ISO** & **POLY** Heater Replacement



### Important Safety Instructions

Read all warnings and instructions in your Guardian operation manual. Save these instructions.



**⚠ CAUTION**

- Make sure the electrical power is disconnected.
- Make sure the system is flushed out.
- Make sure the ISO & POLY gauges read zero pressure



The cover can be removed while the heated hoses are still connected to the front of the system (not shown above).

3. Use a 5/16 in. wrench and remove the 4 screws in the top trim ring.

1. Use a 5/32 in. hex wrench and remove screws from the right side.



2. Remove the black trim ring.



4. Use a 5/16 in. wrench and remove the screws from the left side.



5. The "red cover" can now be removed.



*The cover can be removed while the heated hoses are still connected to the front of the system. Make sure the heated hose is straight and pull the red cover while sliding it down the heated hose. Place it far enough away to continue the following procedures (not shown above).*



7. Carefully disconnect the small green connector by pulling it apart.



6. Complete the POLY side first (steps 6 - 38). Carefully disconnect the large green connector by pulling it apart. *Replace the POLY side first before starting the ISO side.*



8. Use a 5/32 in. hex key wrench and remove the 5 screws from the front heater support bracket.



POLY = yellow wires  
ISO = orange wires





- 9.** Remove the heater support bracket and set it to the side, to be reused.



- 11.** Use a 7/8 in. wrench to remove the elbow fitting from the inlet fitting at the back side of the heater (see photo below).



- 10.** At the back of the system carefully unplug the thermocouple connector.

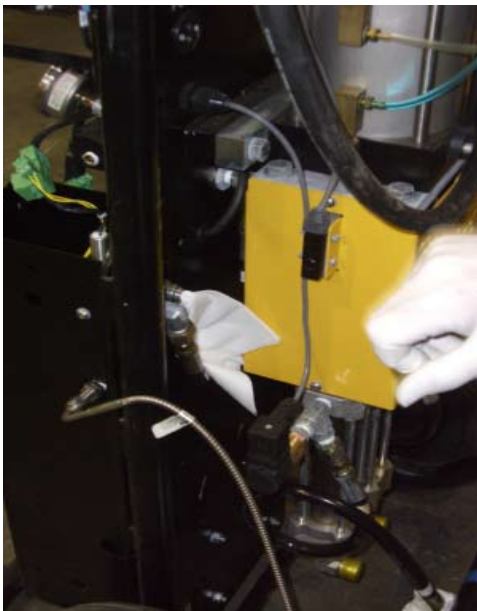




- 12.** Carefully stretch the inlet hose out, use a clean up towel to stop any spillage of material.



- 14.** Use a 5/16 in. wrench to loosen the fitting on the outlet hose. Use a clean up towel to catch any spillage and carefully stretch out the outlet hose.



- 13.** Use a clean up towel to stop any spillage of material from the heater fitting.



- 15.** The heater can now be removed from the system.



**16.** Place the heater on a flat work surface.



**19.** Separate the heater support bracket from the heater.



Do not lose the top & bottom support washers.



**17.** Use a 5/32 in. hex key wrench to remove the bottom screw.



**18.** Use a 5/32 in. hex key wrench to remove the top screw.







 **New replacement POLY heater (yellow wires).**  
**New replacement ISO heater (orange wires).**

**21.** Remove the caps from the inlet & outlet fittings.  
(not shown)



**22.** Place the top support washer over the screw hole.



**23.** Place the bottom support washer over the screw hole.



**24.** • Place the heater support bracket on the replacement heater.  
• Align the top & bottom holes, make sure the support washers are in there proper place.



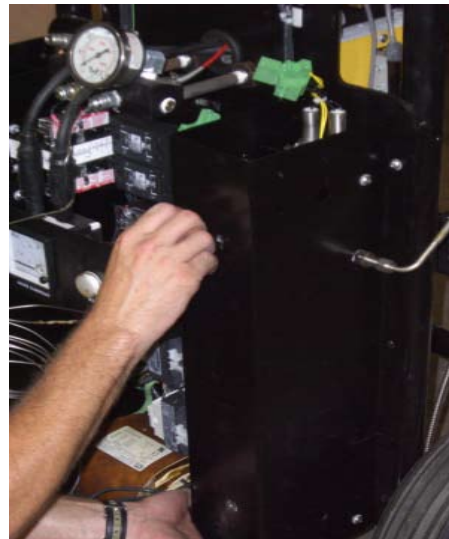
**25.** Reinstall the bottom screw to the heater and tighten.



**26.** Reinstall the top screw to the heater and tighten.



**27.** Install the new heater and support bracket back onto the system.



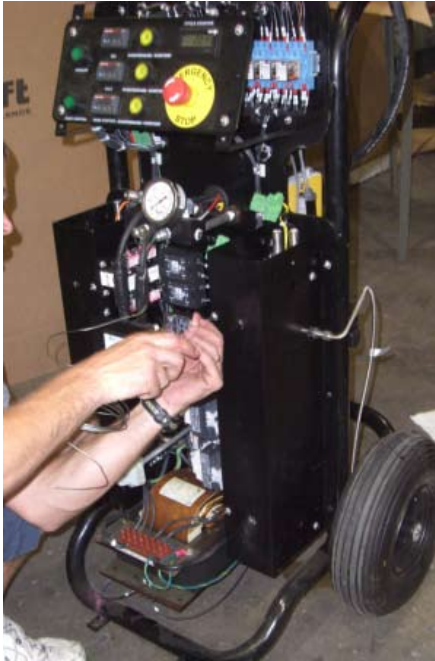
**29.** Align the front heater support bracket to the heater support bracket and hand tighten the 5 screws.



**28.** Align the heater support bracket with the holes and replace the 5 screws, tighten securely.







- 30.** Use a 5/32 in. hex key wrench and tighten the 5 screws securely



- 32.** Tighten the outlet hose fitting by hand.



- 31.** Attach the outlet hose to the elbow fitting



- 33.** Use a 15/16 in. wrench and tighten the outlet hose fitting tight.



**34.** Hand tighten the inlet hose fitting.



**35.** Use a 7/8 in. wrench and tighten the inlet hose fitting tight.



**36.** Carefully reconnect the small green connector by aligning the two ends and pushing them together.



**37.** Carefully reconnect the large green connector by aligning the two ends and pushing them together.



**38.** Carefully connect the thermocouple plug into the receptacle.

**STOP - POLY** heater replacement is complete. Repeat steps 6-38 for **ISO** heater replacement.



- 39.** The “red” cover can be reattached to the system (not shown above) slide the cover back up the heated hose, lift and grab the wires to help in placement.



- 40.** Align and reattach the cover.



- 41.** Hand tighten the screws on the right side.



- 42.** Hand tighten the screws on the left side.





**43.** Use a 5/16 in. wrench and tighten all 4 screws.



**44.** Replace the “black” trim ring and hand tighten all 4 screws.



**45.** Use a 5/16 in. hex key wrench and tighten all 4 screws.



**46.** Now your system is ready. Follow the start-up procedure in the user manual.

Notes
-------

[illegible]

Quality and Performance...  
GENUINE GLASCRAFT

**Glas****Craft**

DISPENSING EXCELLENCE



**WWW.DIAMONDLINERS.COM**

**Mailing Address**

9507 Santa Fe Springs Road  
Santa Fe Springs, CA 90670

**Phone**

(562) 781-1045 or (800) 543-1212

**Fax**

(562) 781-1045

**Email**

**info@diamondliners.com**



www.glascraft.com

313276A

GRACO INC.  
P.O. BOX 1441  
MINNEAPOLIS, MN 55440-1441

Phone 612-623-6921  
Toll Free 1-800-328-0211  
Fax 612-378-3505

A GRACO COMPANY